
NARROMINE SHIRE COUNCIL
ORDINARY MEETING BUSINESS PAPER – 13 MARCH 2019
REPORTS TO COUNCIL – INFRASTRUCTURE AND ENGINEERING SERVICES

1. WORKS REPORT

Author	Director Infrastructure and Engineering Services
Responsible Officer	Director Infrastructure and Engineering Services
Link to Strategic Plans	CSP – 4.3.4 Ensure Council's property assets are monitored and well managed

Executive Summary

This report provides information regarding works undertaken for the given period in regards to both operational and capital works.

Report

The Works Report (**Attachment No. 1**) for the period 9 February 2019 to 8 March 2019 is presented to Council for their information.

Financial Implications

Council has provision for these services in its 18/19 Operational Budget.

Legal and Regulatory Compliance

Local Government Act 1993
Roads Act 1993

Risk Management Issues

Nil

Internal/External Consultation

Nil

Attachments

- Works Report

RECOMMENDATION

1. That the information be noted.

2. TRANGIE SPORTING PRECINCT CONCEPT PLAN

Author	Recreational Services Supervisor
Responsible Officer	Director Infrastructure and Engineering Services
Link to Strategic Plans	CSP – 1.1.4 Promote services and provide facilities that foster healthy lifestyles CSP - 1.1.5 Recognise the importance and consider resources needed to maintain open spaces, to encourage greater use by the community

Executive Summary

This report presents a draft concept plan for the future development of the Trangie Sporting Precinct for placement on public exhibition for comment.

Report

At Council's Ordinary Meeting on the 8th August 2018, the Sport and Recreational Services Master Plan 2018 was adopted.

Within the master plan is an action item to:

"Prepare strategies for major sporting precincts to be multi-functional and of a high standard to attract higher usage for both sport and special events"

In response to this action, Council engaged the Barnson Landscape Architecture team to develop a design for the Trangie Sporting Precinct. (**Attachment No. 2**).

Three workshops have been conducted with sporting clubs who utilise the grounds to identify their future requirements, gain long term ideas for the development of their sport, and facilitate a design which balances the varying needs of all clubs.

The feedback from these workshops was collated by the Barnson Landscape Architecture team and the concept plan developed.

The concept plan was developed with consideration to the following objectives:

- Creation of a multifunctional park for the entire community
- Multipurpose spaces
- Enhance landscape
- Improve accessibility
- Improve visitation
- Long term sustainability

Following public exhibition feedback, the concept plan will be staged to allow for identification of potential funding opportunities, as well as prioritising needs and community demand in a logical way to ensure the infrastructure is developed in a way that allows future stages to be completed with minimal disruption.

2. TRANGIE SPORTING PRECINCT CONCEPT PLAN CONT.

Financial Implications

This concept plan will be utilised in funding applications to establish a methodical and planned approach which has been through a community consultation process.

Legal and Regulatory Compliance

Nil

Risk Management Issues

Nil

Internal/External Consultation

Consultation has been undertaken with the primary users of the grounds to ensure that the plan meets the needs of their sport. Further consultation may be required at a time when funding becomes available for each stage of the plan.

Attachments

- Trangie Sporting Precinct draft concept plan

RECOMMENDATION

1. That the Trangie Sporting Precinct draft concept plan be adopted and placed on public exhibition for 28 days.

3. TRANGIE BURNS OVAL REDEVELOPMENT – PROGRESS UPDATE

Author	Recreational Services Supervisor
Responsible Officer	Director Infrastructure and Engineering Services
Link to Strategic Plans	CSP – 4.3.4 Ensure Council’s property assets are monitored and well managed. CSP – 1.1.4 Promote services and provide facilities that foster healthy lifestyles CSP - 1.1.5 Recognise the importance and consider resources needed to maintain open spaces, to encourage greater use by the community

Executive Summary

This report provides an update on the current status of the Burns Oval Redevelopment project.

Report

As Council are aware, the Burns Oval Redevelopment project is now nearing completion well before the grant funding completion deadline of 30 June 2019.

Contractors have completed construction works on site as per the agreed scope, including removal of existing turf and cricket pitch, installation of subsurface drainage system, installation of irrigation system, electrical works, installation of new synthetic cricket pitch and laying of new turf. In conjunction with the works by the contractor, Council have erected new goal posts and have engaged a fencing contractor to install a boundary fence. A black chain mesh fence will be installed when the grounds are firm enough to support the footings.

Signage has been erected at two entrances to the grounds as per the requirements of the funding agreement. This signage acknowledges financial contributors to the project. Further signage acknowledging other supporting partners will be considered upon the ground opening.

The works have been inspected and tested by a number of Council staff and the project is now in defects liability period. The project contract includes a defects liability period with the contractor for the next 12 months, whereby any issues that arise will be addressed and rectified by the contractor.

There are currently minor issues with the quality of the topsoil used on the grounds, the settling of turf, drainage and irrigation adjustments that are being rectified. Minor issues such as these will not affect the timing of the opening of the field for play. To ensure the best possible grow in phase, the grounds will remain closed until the turf is considered suitable for play by both Council staff and the contractor’s landscape team.

3. TRANGIE BURNS OVAL REDEVELOPMENT – PROGRESS UPDATE CONT.

The contractor is engaged for a further 12 months to maintain the turf and irrigation systems. This includes any repairs that may be required. Council has the responsibility to mow the grounds during this time.

To ensure that any defects that are raised are rectified in the 12 month period, Council holds a bank guarantee provided by the contractor as security.

Council has completed this project within budget.

At this stage, dependent upon weather conditions a formal opening of Burns Oval will be scheduled towards the end of March 2019.

Financial Implications

Completed within budget.

Legal and Regulatory Compliance

Nil

Risk Management Issues

The defects liability period is now current and all issues are to be rectified by the contractor for the next 12 months unless immediate rectification due to safety is required.

Internal/External Consultation


A formal opening of the grounds will be scheduled for the end of March 2019.

RECOMMENDATION

1. That the information be noted.

André Pretorius
Director Infrastructure and Engineering Services

Attachment No. 1

	<p>MONTHLY WORKS REPORT</p> <p>Friday, 8 March 2019</p>	<p>Infrastructure and Engineering Services Narromine Shire Council Tel: 02 6889 9999 Fax: 02 6889 9998 mail@narromine.nsw.gov.au</p>
---	---	---

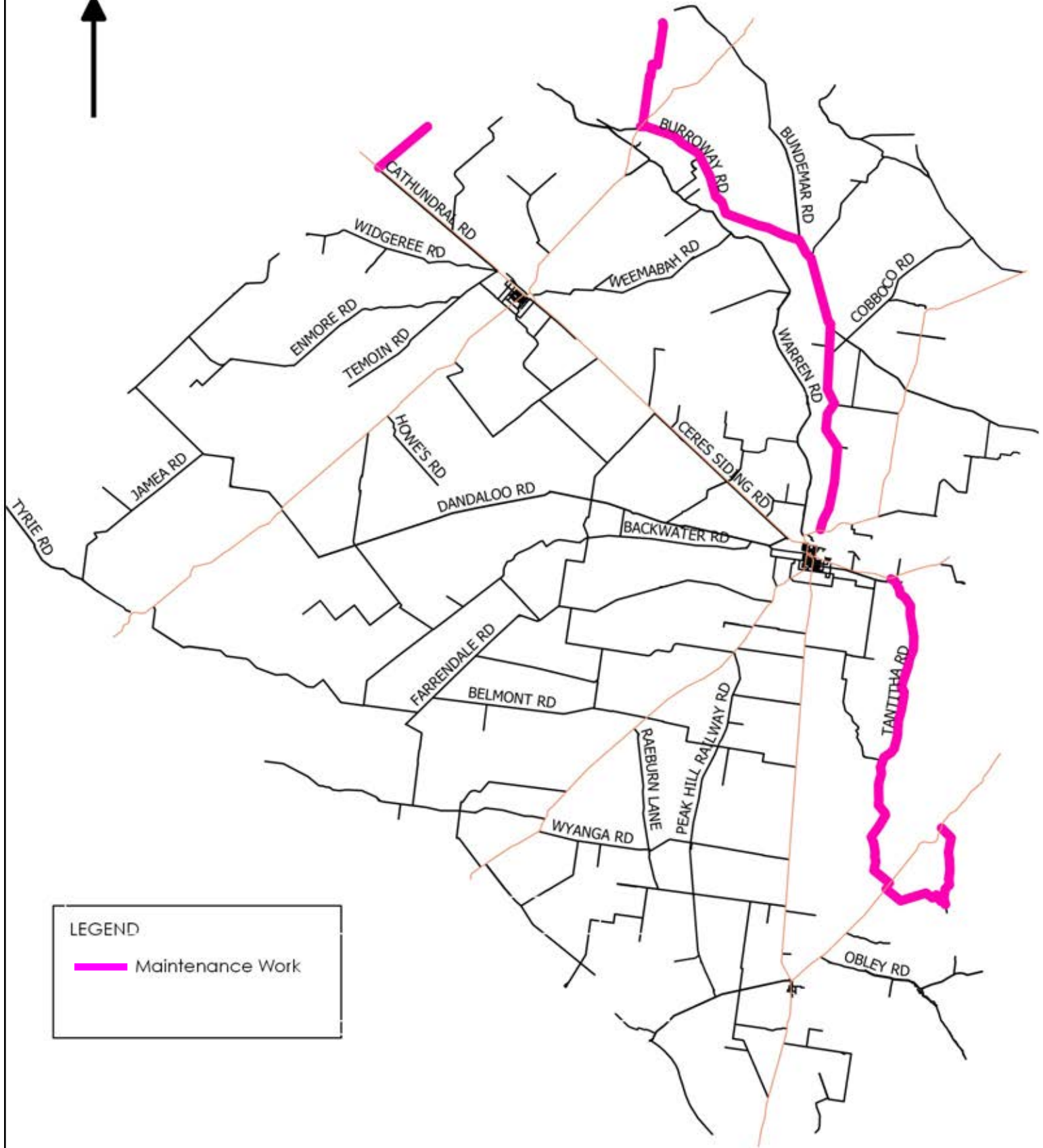
*Road and Park users are to proceed with caution at all work sites and observe work signs to ensure safety.
 Speed zones are enforceable with possible short delays.
 For all enquiries, please contact Council's Infrastructure and Engineering Services Department on 6889 9999.*

URBAN – Narromine, Trangie, Tomingley	
Various Streets (Narromine)	<p><u>Maintenance:</u></p> <ul style="list-style-type: none"> • Routine Maintenance Program, patching and sweeping, etc.
Various Streets (Trangie)	<p><u>Maintenance:</u></p> <ul style="list-style-type: none"> • Routine Maintenance Program, patching and sweeping, etc.
Various Streets (Tomingley)	<p><u>Maintenance:</u></p> <ul style="list-style-type: none"> • Routine Maintenance Program - patching.
UNSEALED ROADS NETWORK	
Various Unsealed Roads	<p><u>Maintenance: Map No. 1</u> Maintenance Grading in progress or completed;</p> <ul style="list-style-type: none"> • Belowrie Road completed; • Momo Road; • Gibson’s Lane; • Montgomery’s Lane • Tantitha Road (Southern end); <p><u>Capital: Map No. 2</u> Resheeting in progress or completed;</p> <ul style="list-style-type: none"> • Belowrie Road.
SEALED ROADS NETWORK	
Various Sealed Roads	<p><u>Capital:</u></p> <ul style="list-style-type: none"> • Eumungerie Road Upgrade continuing. • Farrendale Road shoulder widening rehab. <p><u>Maintenance:</u> Shoulder grading in progress or completed;</p> <ul style="list-style-type: none"> • Burroway Road <p>Resealing in progress or completed;</p> <ul style="list-style-type: none"> • Trangie Dandaloo Road • Tomingley Road • Burroway Road • Warren Road <p><u>Urban Narromine:</u></p> <ul style="list-style-type: none"> • Mingelo Street • Cathundral Street <p><u>Urban Trangie:</u></p> <ul style="list-style-type: none"> • Mullah Street • Cemetery Road

WATER AND SEWER	
Narromine	<p>Level 3 water restrictions continue in Narromine, in accordance with the odds and evens scheme. The town supply is meeting the demand except on days of extremely high temperatures.</p> <p>Fencing of Duffy Street Reservoir compound is now complete. Concrete works to enable installation of the backup generator are being carried out. Staff are carrying out replacement of house water services in Manildra Street, prior to continuation of the mains rationalisation and replacement program.</p> <p>Staff continue to carry out reticulation system and house services maintenance.</p> <p>Swimming Pool water quality monitoring is ongoing along with regular Drinking Water Quality sampling and analysis. Staff are continuing a program to replace galvanised guide rails with stainless steel rails in all sewer pump stations as part of a proactive maintenance program.</p>
Trangie	Staff have continued reticulation system maintenance. Swimming pool water quality monitoring is ongoing along with regular drinking water quality sampling and analysis.
Tomingley	Continued regular system maintenance.
PARKS AND OPEN SPACE NETWORK CBD Gardens, Parks, Ovals, Villages	
Narromine CBD	General maintenance.
Narromine Parks and Reserves	General maintenance and mowing. Current water restrictions are limiting turf growth.
Narromine Sports Grounds	General maintenance and mowing. Current water restrictions are limiting turf growth.
Narromine Streets	Tree planting program on hold due to water restrictions General maintenance.
Trangie CBD	General maintenance and weed control ongoing.
Trangie Parks	General maintenance and mowing.
Trangie Sports Grounds	Burns Oval redevelopment in turf grow-in phase. Irrigation has been installed and is operating twice daily during the grow-in phase.
Trangie Streets	General maintenance. Street sweeping weekly on Tuesday's.
Tomingley Village	General maintenance.
SWIMMING POOLS	
Narromine Pool	School swimming carnivals complete. Close of season expected at the end of March.
Trangie Pool	School swimming carnivals complete. Close of season expected at the end of March.

AERODROME	
Narromine Aerodrome	Slashing and weed control continue.
BUILDING MAINTENANCE	
All Buildings	General maintenance as required.
Narromine Medical Centre	General maintenance as required.
Council Administration Buildings	General maintenance as required.
PUBLIC CONVENIENCES	
Rotary Park (Narromine) Public Toilets	General maintenance and repairs. Toilet facilities cleaned daily.
Burroway Street Public Toilets (adjacent to Pool)	
Argonauts Park (Trangie) Public Toilets (Goan Waterhole)	Toilet facilities cleaned every Tuesday, Thursday and Saturday.
Dandaloo Street Trangie (adjacent to Bakery)	General maintenance and repairs. Toilet facilities cleaned every Monday, Wednesday and Friday.
Wetlands	Toilet block secured and cleaned daily.
CEMETERIES	
Narromine Cemetery	General maintenance, mowing and weed spraying. Topping up of graves. A number of irrigation repairs have been completed.
Trangie Cemetery	General maintenance, mowing and weed spraying. Topping up of graves.

Map No. 1



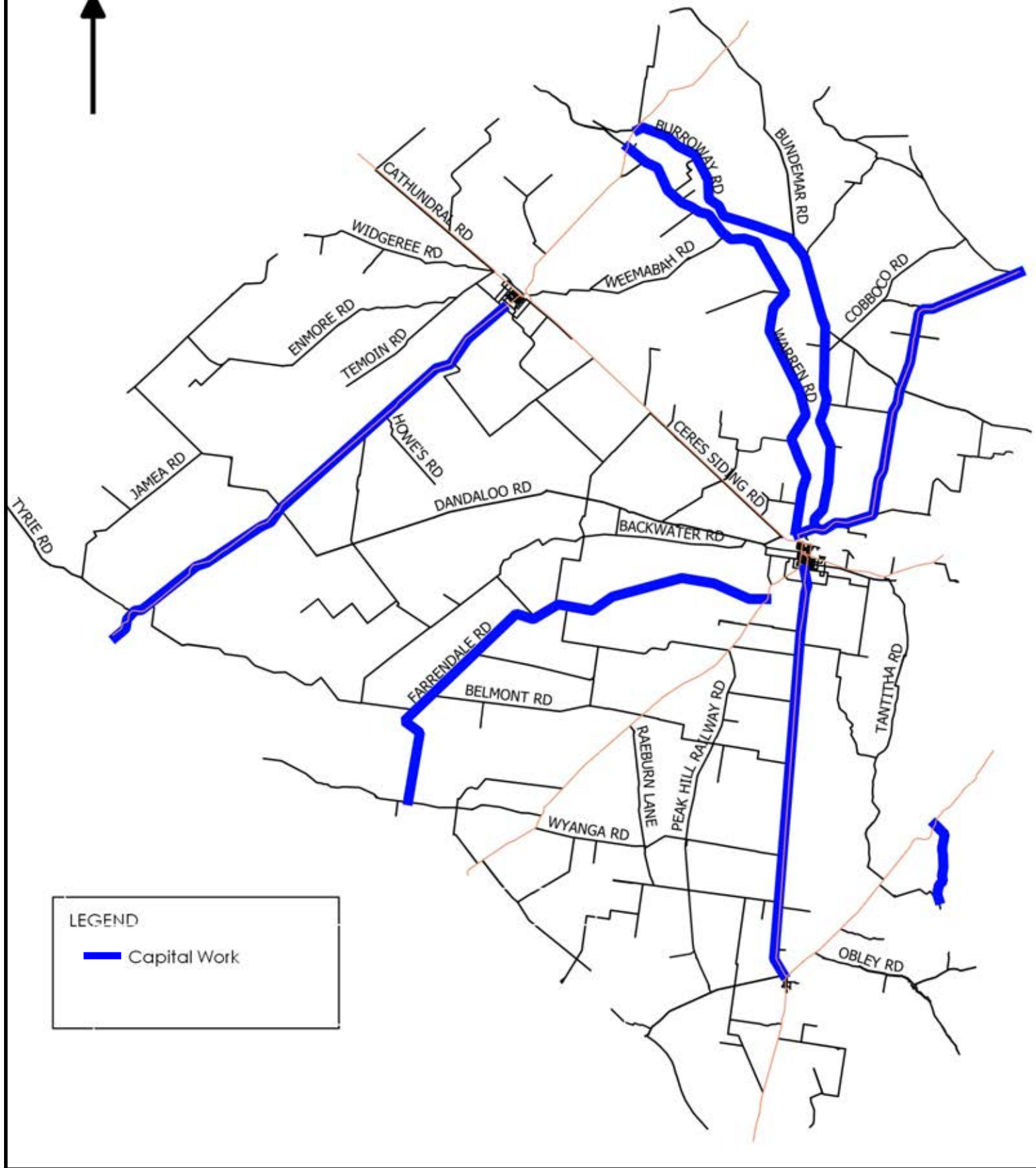
NARROMINE SHIRE COUNCIL

Maintenance Works Program 2018-2019 - February

Notes - roads that are highlighted have had work undertaken on them and are not specific sections



Map No. 2



NARROMINE SHIRE COUNCIL

Capital Works Program 2018-2019 - February

[Return to report](#)

Notes - roads that are highlighted have had work undertaken on them and are not specific sections



TRANGIE SPORTING PRECINCT DRAFT CONCEPT PLAN



5 MARCH 2019

TRANGIE SPORTING PRECINCT - DRAFT CONCEPT PLAN

DRAFT MASTER PLAN

HARRIS STREET



BURRAWAY STREET

N
Not to scale

LEGEND

- ① Existing multi-use court to be retained. Surface to be upgraded in future
- ② New netball courts with optional multi-purpose tennis set-up
- ③ Bench seating
- ④ BBQ area with picnic tables, and planting, retain existing BBQ or upgrade
- ⑤ BBQ area with one standard and one accessible BBQ, picnic tables, seating walls, bubbler station, garbage bins and tree planting
- ⑥ Existing skate park to be retained
- ⑦ Playground targeting toddlers to children ~6 years. Equipment to be accessible with shade sail over
- ⑧ Playground targeting children 6+ years. Equipment to be accessible with shade sail over
- ⑨ New 1.8m high fence surrounding oval
- ⑩ Existing pump house to be retained
- ⑪ Re-vegetation zone with informal paths and educational signage
- ⑫ Primary circulation path 2.5m wide, exposed aggregate or coloured concrete
- ⑬ Secondary access path, 2m wide, coloured concrete or similar
- ⑭ New sports lighting
- ⑮ Indicative 400mm track line markings
- ⑯ Exercise stations on primary circulation path
- ⑰ Emergency vehicle access
- ⑱ Upgraded soccer field with numerous field set-up arrangements
- ⑲ New or relocated lighting to soccer field
- ⑳ Indicative 100+ meter track line markings
- ㉑ Upgraded long jump pit with run up
- ㉒ Relocated shot-put and discus rings
- ㉓ Teenage / seating hub. Various seating types and arrangements for small and medium size groups with lighting and shade trees
- ㉔ Central club house including function space, amenities, change rooms, storage, canteen and bar
- ㉕ Covered walkway linking new club house to existing tennis club building
- ㉖ Parking bays
- ㉗ Disabled parking
- ㉘ Bus drop off zone
- ㉙ Minibus turning area
- ㉚ Existing tennis club building restored
- ㉛ Existing tennis courts upgraded
- ㉜ Existing lighting upgraded
- ㉝ Mass planting, refer to planting palette
- ㉞ Shade awning over bench seating
- ㉟ Crushed gravel
- ㊱ Covered two tiered seating with accessible areas
- ㊲ New irrigation to northern park areas
- ㊳ Fencing to tennis and netball courts
- ㊴ Bubbler station
- ㊵ Pole top / solar lighting

TRANGIE SPORTING PRECINCT - DRAFT CONCEPT PLAN

PRECEDENT IMAGES



Upgraded facilities allowing for night time use and providing greater opportunities for local sports clubs to grow.



Retain heritage items in park and link to new facilities.



Image from the Leader



Improved playground and exercise facilities for all community members.



New central sports club house providing a range of amenities to the local community and sporting clubs.



Image by AG Nova Architects



Image by Copland Associates



Paley Park NYC - Zion Breen Richardson Associates

A range of gathering spaces throughout the park for picnics, gatherings and BBQs.



Macquarie University Courtyard by HASSELL

Flexible open space for community events such as markets, fairs or moonlight cinema.



TRANGIE SPORTING PRECINCT - DRAFT CONCEPT PLAN

INDICATIVE MATERIALS PALETTE

PATHWAYS AND VEHICLE ACCESS



Primary Path - Exposed aggregate concrete



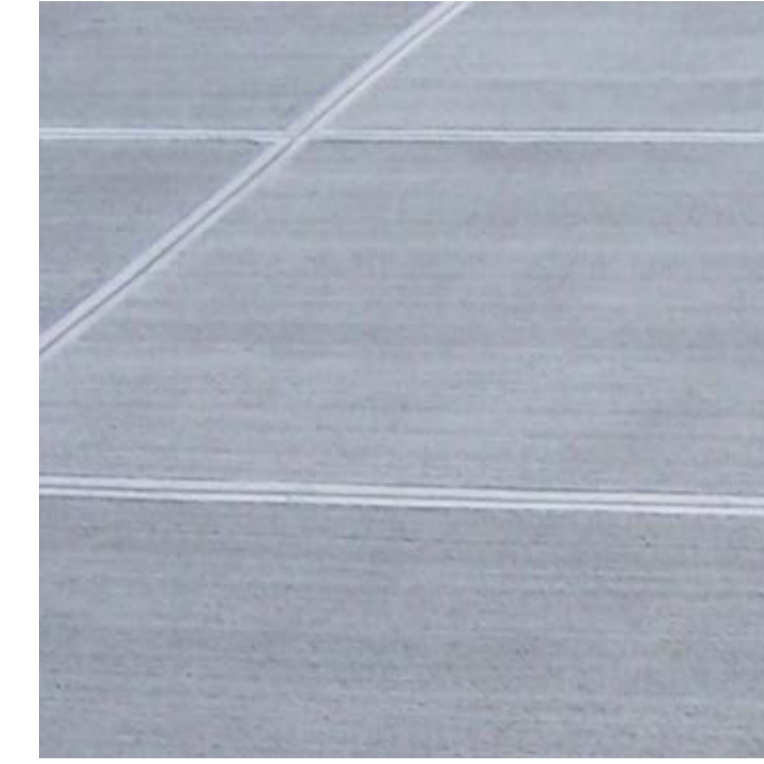
Primary Path - Exposed aggregate concrete



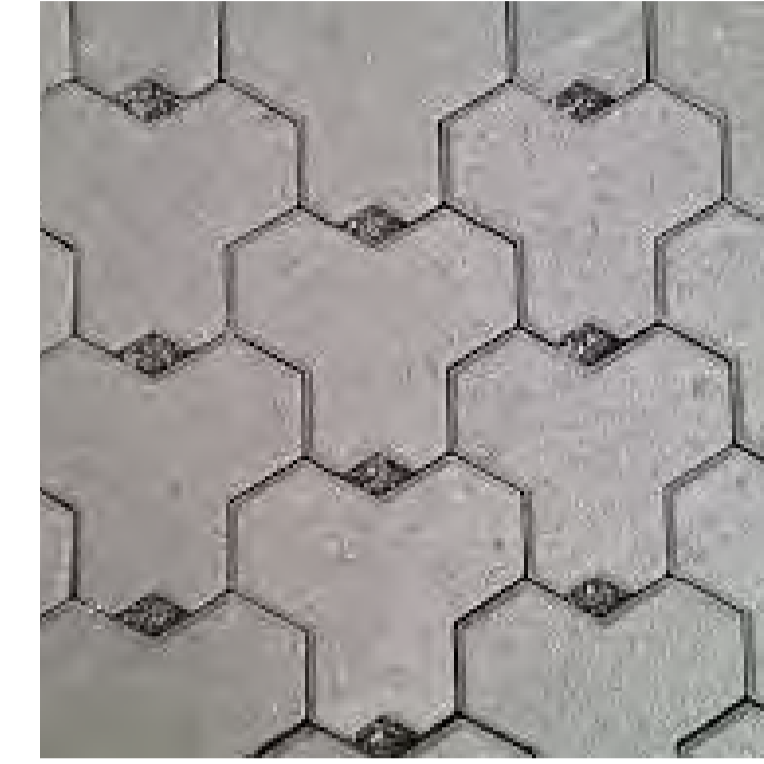
Primary / Secondary Path - Coloured concrete



Primary / Secondary Path - Coloured concrete



Secondary Path - Broom finished concrete



Vehicle areas - Interlocking concrete unit pavers



Vehicle areas - Asphalt



Teenage / Seating hub - Crushed granite



Playgrounds / exercise stations - Rubber softfall



Playgrounds - Mulch softfall



Planting areas - Mulch

FURNITURE AND FIXTURES



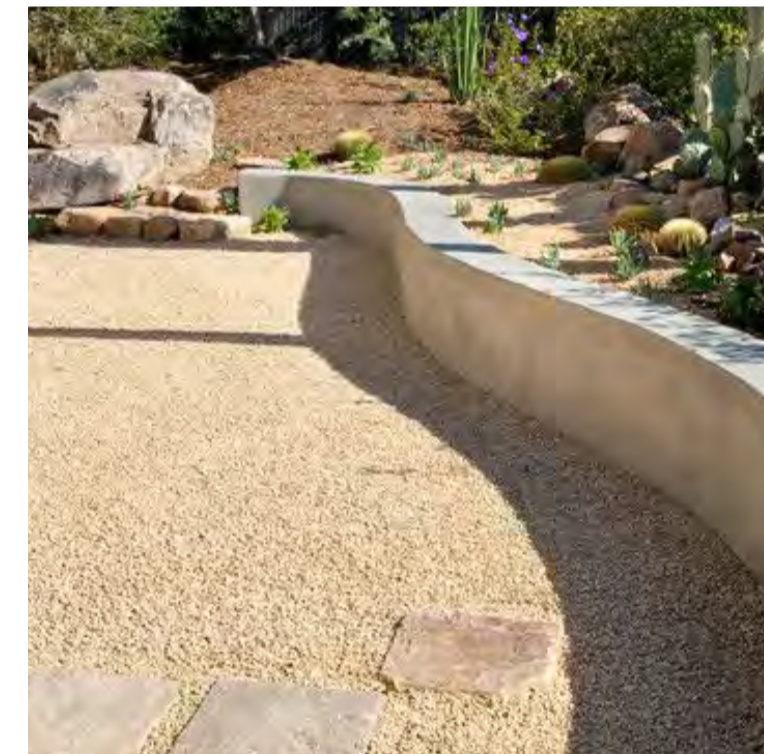
Teenage / Seating hub - Chaise seating



Teenage / Seating hub - Tables and seating walls



Teenage / Seating hub - Pole top or solar lights



Playgrounds / BBQ areas - Seating walls



BBQ facilities



BBQ areas - Picnic tables



Bubbler



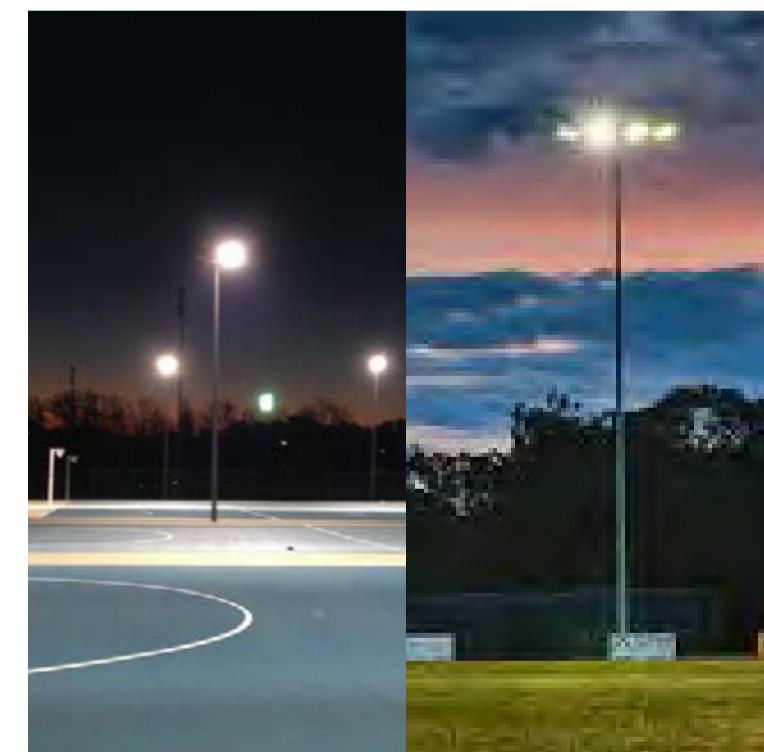
Bench seating



Covered two tiered seating



Accessible spaces in tiered seating



Sport / flood lighting



Fencing to oval

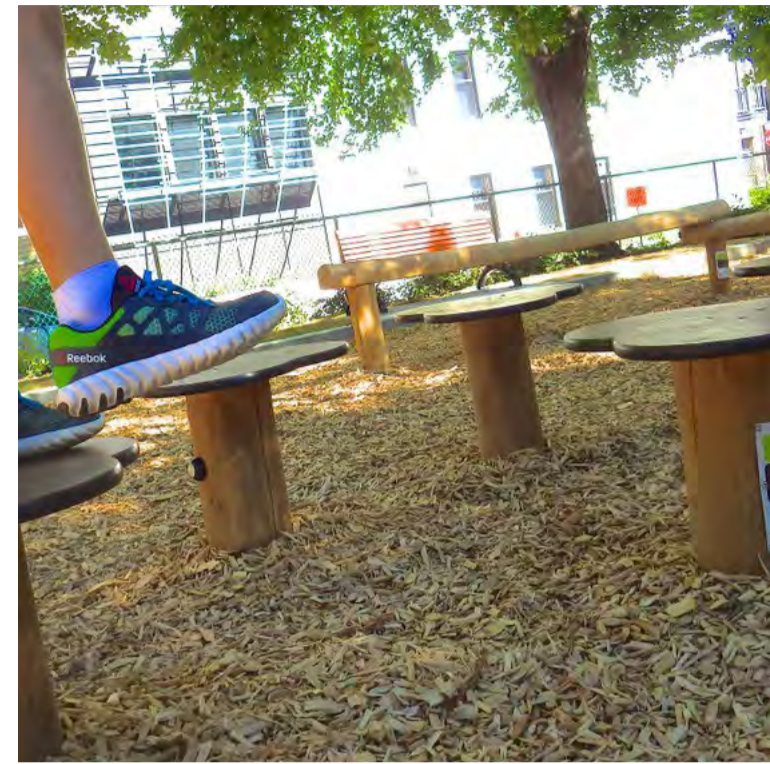


Fencing to tennis courts and rear of netball courts

TRANGIE SPORTING PRECINCT - DRAFT CONCEPT PLAN

INDICATIVE EQUIPMENT SCHEDULE

PLAYGROUND EQUIPMENT - TODDLER TO 5+ YEARS



Kompan - waterlily balance or similar



Kompan - forest bug rocker or similar



Kompan - playhouse or similar



Kompan - swing set or similar



Kompan - baby swing seat or similar



Kompan - toddler swing seat or similar



Kompan - junior spica or similar

PLAYGROUND EQUIPMENT - CHILDREN 5+ YEARS



Kompan - rope play or similar



Mound slide



Kompan - supernova or similar



Kompan - large swing set or similar



Stone blocks and stepping stones in garden beds



Shade sails

PLAYGROUND EQUIPMENT GENERAL

EXERCISE STATIONS



A_space stretching station



A_space body pulls and push ups



A_space sit up station



A_space leg press



A_space chest press



A_space pull ups and leg raises

TRANGIE SPORTING PRECINCT - DRAFT CONCEPT PLAN

INDICATIVE PLANTING PALETTE

TREES



Corymbia maculata - Spotted Gum



Eucalyptus melliodora - Yellow Box



Eucalyptus sideroxylon - Red Ironbark



Lagerstroemia indica 'Natchez' - White Crepe Myrtle



Pyrus calleryana 'Chanticleer' - Chanticleer Pear



Quercus palustris - Pin Oak



Ulmus parvifolia - Chinese Elm

SHRUBS



Chamelaucium uncinatum - Geraldton wax



Doryanthes excelsa - Gynea Lily



Hakea laurina - Pin Cushion Hakea



Leptospermum flavescens 'Pacific Beauty' - Tea Tree



Phormium tenax purpureum - Purple NZ Flax



Raphiolepis indica - Indian Hawthorne

GROUNDCOVERS AND GRASSES



Agapanthus 'Cloudy Days' - Dwarf Agapanthus



Chrysocephalum apiculatum - Common Everlasting



Dianella caerulea 'Breeze' - Dianella



Kennedia coccinea - Coral Vine



Kunzea parvifolia dwarf - Dwarf Tick Bush



Lomandra 'Tanika' - Mat Rush



Pennisetum alopecuroides - Fountain Grass



Poa labillardieri - Tussock Grass



Stachys byzantina - Lambs Ears



Themeda triandra - Kangaroo Grass